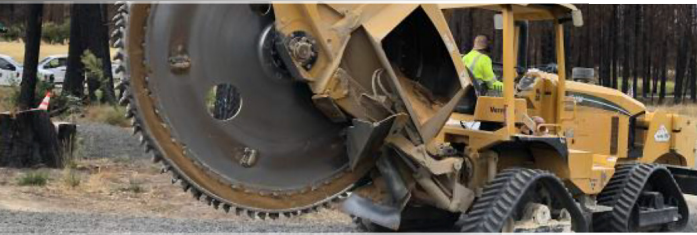


IT'S TIME TO GO UNDERGROUND!

**A UNIQUE OUTREACH EVENT FOR AN EPIC CONSTRUCTION INITIATIVE
THAT WILL TRANSFORM CALIFORNIA**



**WEDNESDAY, NOVEMBER 9, 2022 | 4:00PM TO 6:30PM | REFRESHMENTS AND HORS D'OEUVRES TO BE SERVED
EXECUTIVE ORDER RESTAURANT | 868 MISSION STREET AT 5TH STREET, SAN FRANCISCO, CALIFORNIA, 94103**

In July 2021, PG&E announced its intention to underground approximately 10,000 miles of its above-ground electric distribution power lines that are located in areas at high risk of wildfire. Potentially costing upward of \$20 billion, PG&E is committed to the utilization of qualified Minority, Women, Disabled Veteran, LGBT and PDBE certified firms on this historic initiative.

Join PG&E, BuildOUT California and our Allies for this high-energy outreach event which will put your LGBT/MBE/WBE/DVBE/PDBE firm face to face with key decision-makers who currently hold Tier-One Master Service Agreements for Construction of the 10,000 Mile Undergrounding Project.

**PAID PARKING: 5TH AND MISSION GARAGE | EXCEPTIONAL ELECTRIC VEHICLE CHARGING STATIONS
PUBLIC TRANSPORTATION: ACCESSIBLE BY BART AND MUNI POWELL STREET STATION**

CO-SPONSORED BY:



HOSTED BY:



QUESTIONS: INFO@BUILDOUTCALIFORNIA.ORG

RSVP